

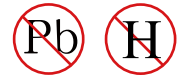


YEA SHIN TECHNOLOGY CO., LTD

UF800 THRU UF8010

ULTRAFAST SWITCHING RECTIFIERS

VOLTAGE- 50 to 1000 Volts CURRENT - 8.0 Ampere



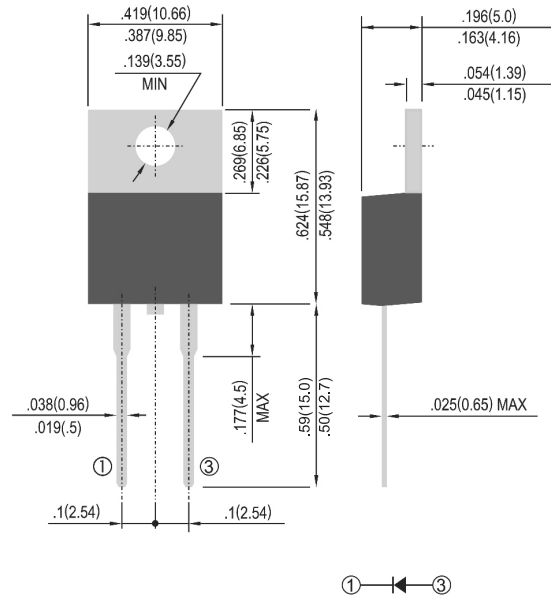
FEATURES

- Plastic package has Underwriters Laboratory Flammability Classification 94V-0 utilizing Flame Retardant Epoxy Molding Compound.
- Exceeds environmental standards of MIL-S-19500/228
- Low power loss, high efficiency.
- Low forward voltage, high current capability
- High surge capacity.
- Ultra fast recovery times, high voltage.
- High temperature soldering : 260°C / 10 seconds at terminals
- Pb free product at available : 99% Sn above meet RoHS environment substance directive request

MECHANICAL DATA

- Case: TO-220AC
- Terminals: Lead solderable per MIL-STD-202, Method 208
- Polarity: As marked.
- Standard packaging: Any
- Weight: 0.08 ounces, 2.24 grams.

TO-220AC Unit:inch(mm)



MAXIMUM RATINGS AND ELECTRICAL CHARACTERISTICS

Ratings at 25°C ambient temperature unless otherwise specified.

Single phase, half wave, 60 Hz, resistive or inductive load.

For capacitive load, derate current by 20%

PARAMETER	UF800	UF801	UF802	UF803	UF804	UF806	UF808	UF8010	UNITS
Maximum Recurrent Peak Reverse Voltage	50	100	200	300	400	600	800	1000	V
Maximum RMS Voltage	35	70	140	210	280	420	560	700	V
Maximum DC Blocking Voltage	50	100	200	300	400	600	800	1000	V
Maximum Average Forward Rectified Current at Tc=100°C	8.0								A
Peak Forward Surge Current, 8.3 ms single half sine -wave superimposed on rated load (JEDEC method)	125								A
Maximum Instantaneous Forward Voltage at 8.0 A per element	1.0				1.3	1.5	1.7		V
Maximum DC Reverse Current (Note 3) Ta=25°C at Rated DC Blocking Voltage Ta=125°C	10 500								uA
Typical Junction Capacitance (Note 1)	80					50			pF
Maximum Reverse Recovery Time (Note 2)	50					75			nS
Typical Thermal Resistance Note R JC	15								°C / W
Operating and Storage Temperature Range	-50 to +150								°C

NOTES:

- Measured at 1 MHz and applied reverse voltage of 4.0 VDC
- Reverse Recovery Test Conditions: IF=0.5A, IR=1A, Irr=0.25A
- Thermal resistance from junction to ambient and from junction to lead length 0.375"(9.5mm) P.C.B. mounted

DEVICE CHARACTERISTICS

UF800 THRU UF8010

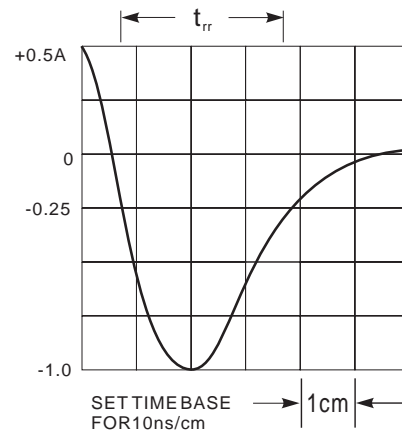
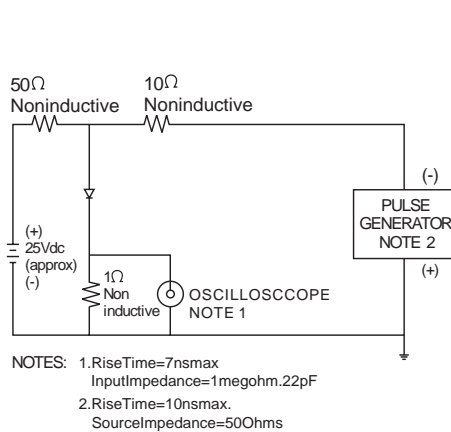


Fig.1-REVERSE RECOVERY TIME CHARACTERISTIC AND TEST CIRCUIT DIAGRAM

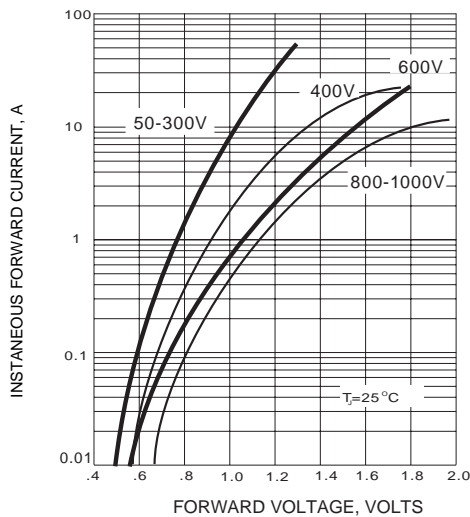


Fig.2-FORWARD CHARACTERISTICS

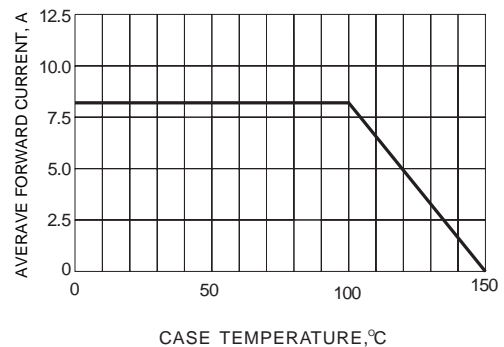


Fig.3-FORWARD CURRENT DERATING CURVE

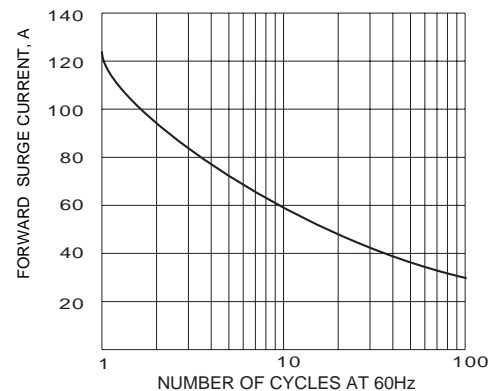


Fig.4-PEAK FORWARD SURGE CURRENT

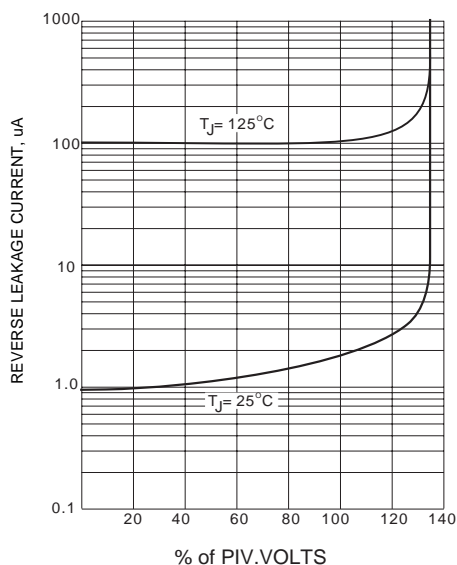


Fig.5-TYPICAL REVERSE CHARACTERISTICS

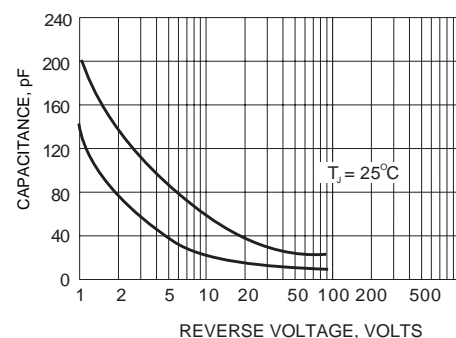


Fig.6-TYPICAL JUNCTION CAPACITANCE