



200mW SOD-323 SURFACE MOUNT  
Very Small Outline Flat Lead Plastic Package  
Schottky Barrier Diode

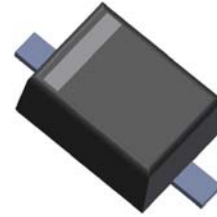


**Absolute Maximum Ratings**  $T_A = 25^\circ\text{C}$  unless otherwise noted

Symbol	Parameter	Value	Units
$P_D$	Power Dissipation	200	mW
$T_{STG}$	Storage Temperature Range	-55 to +125	$^\circ\text{C}$
$T_J$	Operating Junction Temperature	+125	$^\circ\text{C}$
$V_{RRM}$	Repetitive Peak Reverse Voltage	40	V
$V_R$	Reverse Voltage	30	V
$I_F$	Forward Current	30	mA
$I_{FSM}$	Non-Repetitive Peak Forward Current	500	mA

These ratings are limiting values above which the serviceability of the diode may be impaired.

SOD-323 Flat Lead



ELECTRICAL SYMBOL

**Specification Features:**

- Low Forward Voltage Drop
- Flat Lead SOD-323 Small Outline Plastic Package
- Surface Device Type Mounting
- Matte Tin(Sn) Lead Finish
- Pb free product at available : 99% Sn above meet RoHS environment
- Band Indicates Cathode
- ESD Rating:  
Human Body Model, Class 2.  
Machine Model, Class C.

**DEVICE MARKING CODES:**

Device Type	Device Marking
RB751V-40	B5

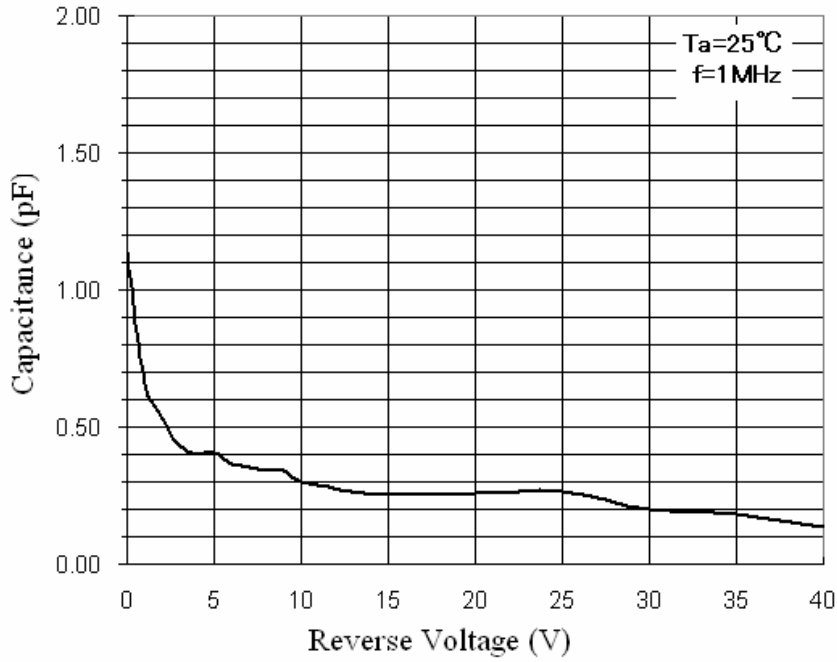
**Electrical Characteristics**  $T_A = 25^\circ\text{C}$  unless otherwise noted

Symbol	Parameter	Test Condition	Limits		Unit
			Min	Max	
$B_V$	Breakdown Voltage	$I_R=10\mu\text{A}$	30		Volts
$I_R$	Reverse Leakage Current	$V_R=30\text{V}$		0.5	$\mu\text{A}$
$V_F$	Forward Voltage	$I_F=1\text{mA}$		0.37	Volts

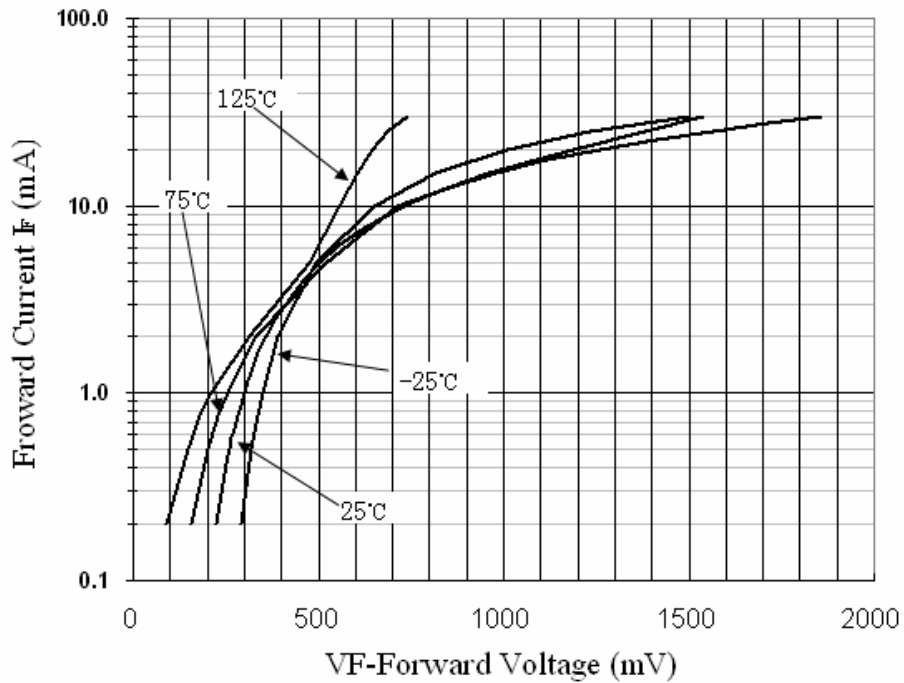
# DEVICE CHARACTERISTICS

## RB751V-40

### Total Capacitance



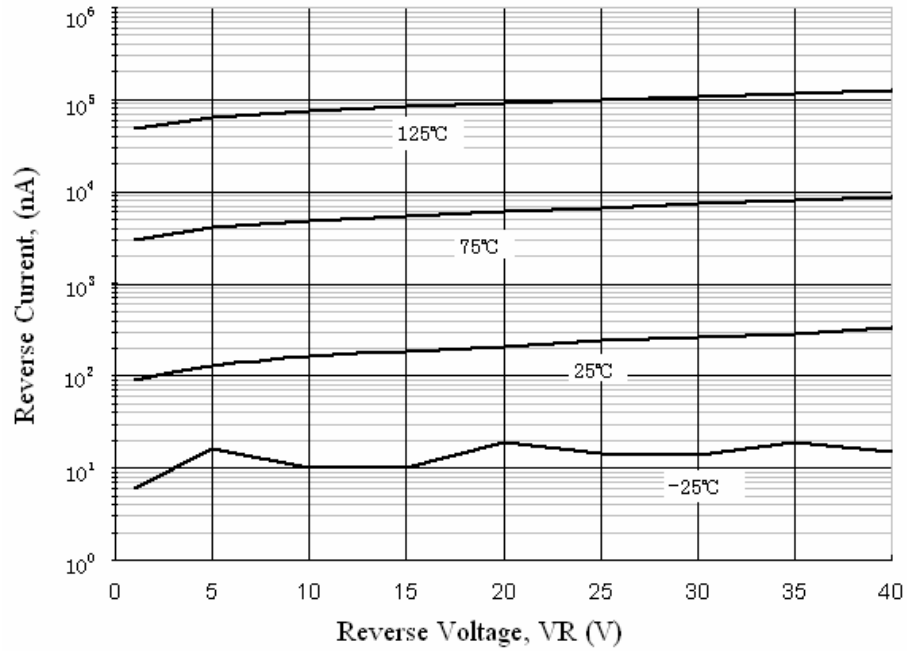
### Forward Voltage vs Ambient Temperature



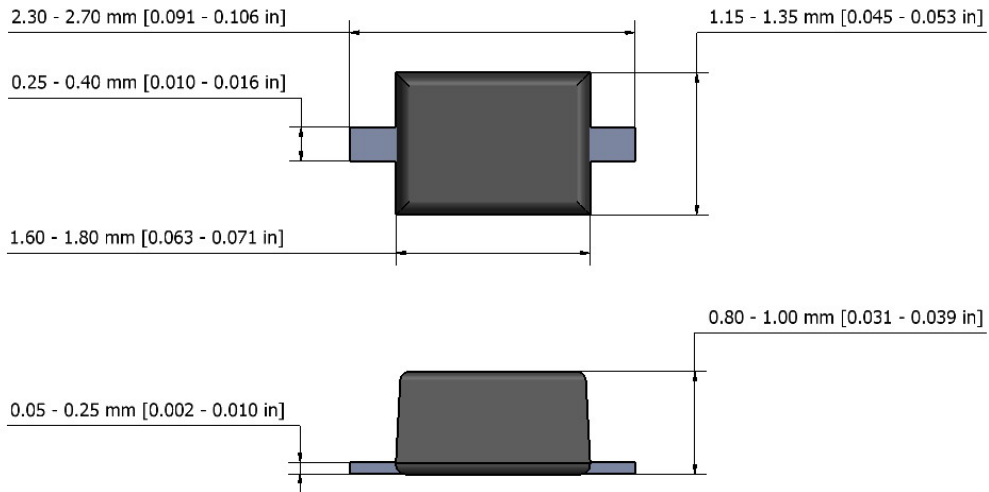
# PACKAGE OUTLINE & DIMENSIONS

## RB751V-40

Reverse Current vs Reverse Voltage



### SOD-323 Package Outline



### SOLDERING FOOTPRINT\*

